

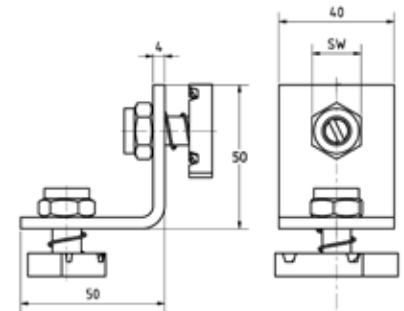
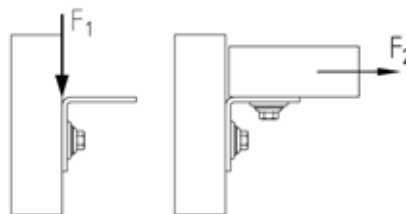
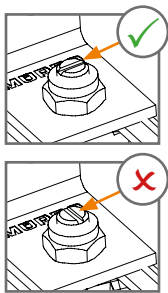
### Mounting angles SB 90° pre-assembled galvanised

#### Field of application

- Pre-assembled angle for connecting MPR and MPC-Support channels at a degree of 90°
- Galvanised for indoor use

#### Advantages

- Universal - 90° corner joints of MPR and MPC-Support channels
- Quick and easy - insert the angle into the support channel and tighten with a cordless or impact screwdriver
- Safe - check the correct position of the sliding nut through a control slot



#### Features

System	Admissible load F1 [N]	Admissible load F2 [N]
MPR	2,500	1,500

Size [mm]	For support channels	Hexagonal socket spanner width SW [mm]	At tightening torque $T_{inst}$ [Nm]	Part no.	Sales unit	Pack unit
50x50x40x4.0	38/24-40/120 41/21-41/124	17	20	169732	20	pieces